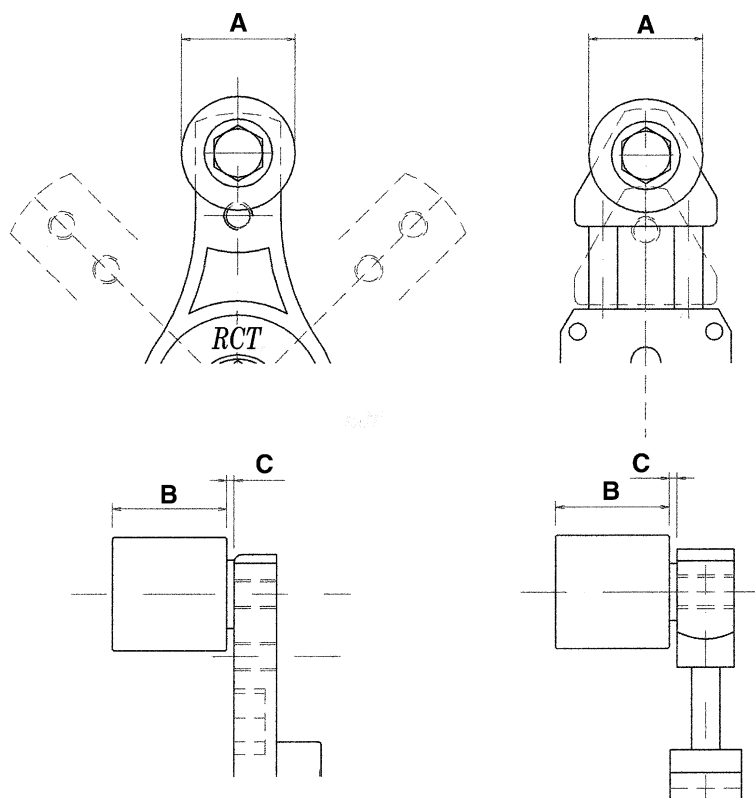
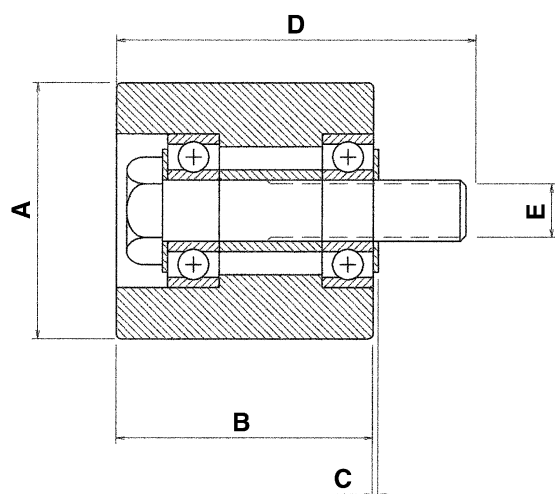




RULLI TENDICINGHIA TIPO RCT-RU

- Rulli tendicinghia in alluminio completi di cuscinetti a sfere 2Z autolubrificanti ed accessori per il montaggio sui tenditori RCT-T e RCT-L.



TIPO	A	B	C	D	E
RU50	50	50	2,5	70	M12
RU60	60	60	2,5	80	M12

Su richiesta si forniscono rulli in poliammide.